

## Tinytag Desktop Viewer

Tinytag Desktop Viewer software is a useful option for users running a Connect Radio/LAN data logging system. Desktop Viewer is a read-only tool which provides a visual representation of the status of a Connect system, displaying the data being recorded by the loggers and showing alerts when any are out of contact.

Desktop Viewer is helpful for customers who need to set different levels of user access for operational or quality control reasons. It allows designated users to view data without full access to certain settings that could inadvertently result in unauthorised changes.

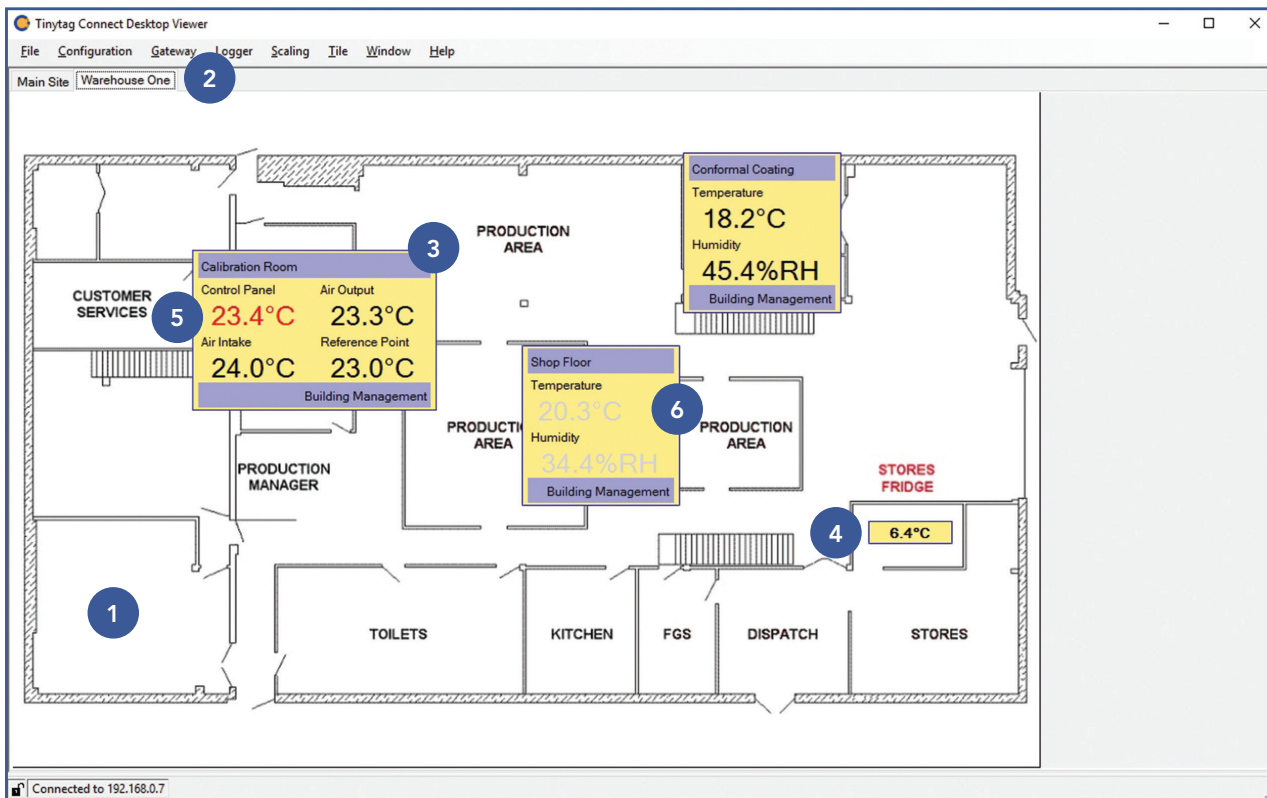
The alarms set in the tool are independent of those set in Tinytag Explorer Connect software so the original configuration will remain unchanged. The data displayed refreshes automatically.

- Read only software tool
- Clear visual representation of data logger status
- No access to Connect system configuration/set-up
- Customise background with floorplans/images
- Visual alarm display

## How Desktop Viewer Works

Users can display tiles (windows displaying logger information) on the Viewer screen showing the readings of selected data loggers. The tiles can be moved and positioned as required. There is an option to set a background, by uploading a floorplan or an image for example, to allow the tiles to be placed where the loggers are recording to give a visual representation of what is happening. For large sites, or sites with a large number of data loggers, multiple tabs can be used to show different sections or groups of loggers.

An example of a Desktop Viewer display is shown below:



- |                                                            |                                      |
|------------------------------------------------------------|--------------------------------------|
| 1 Background                                               | 4 Channel Tile; showing reading only |
| 2 Tabs to different views                                  | 5 Alarm warning                      |
| 3 Full Tile; showing logger title, channel and group names | 6 Logger out of contact              |

Desktop Viewer can be configured to suit the needs of each user, and configurations can be exported/imported and applied to Viewers on other computers or logins.