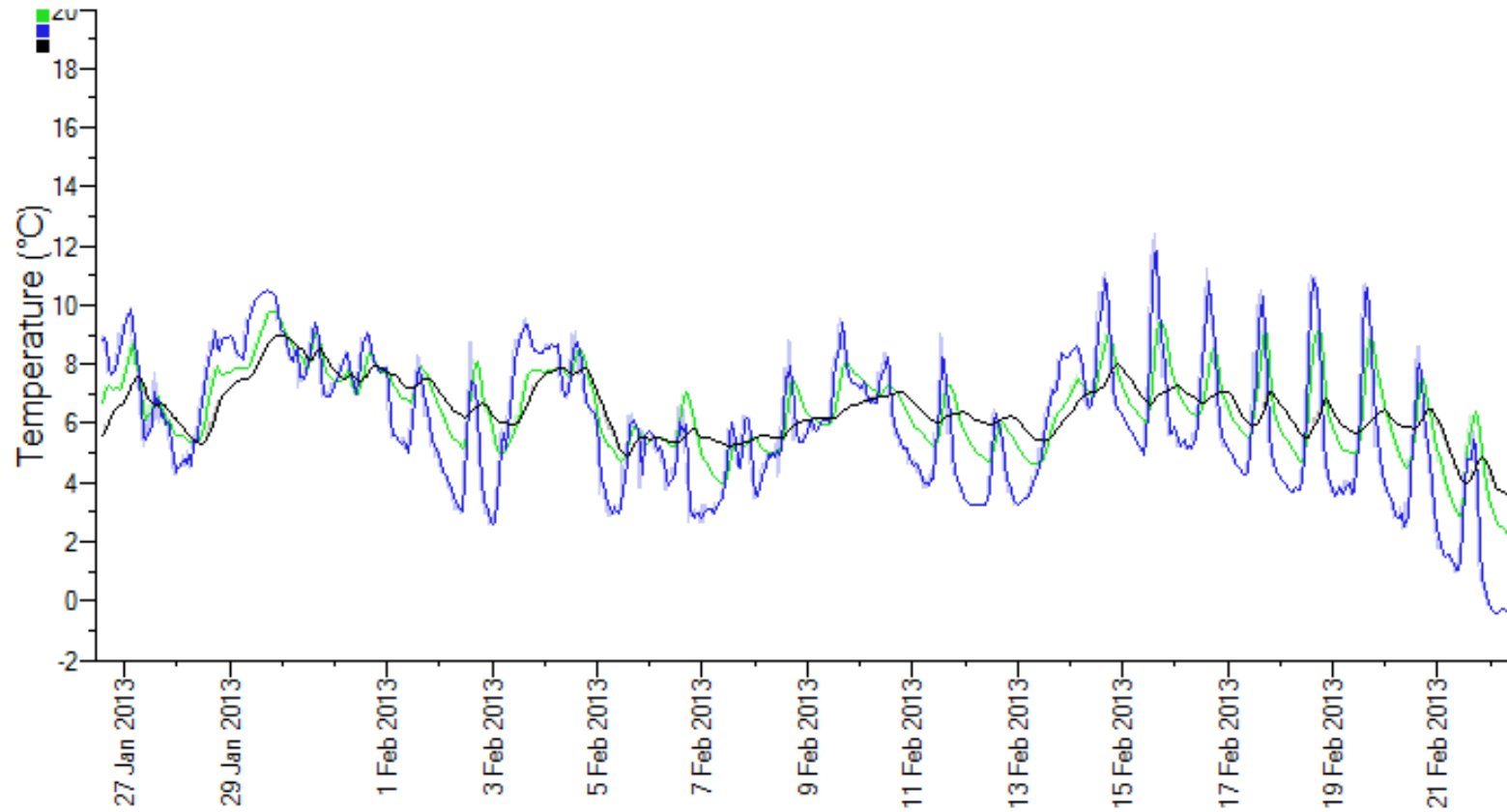


Widow's Tenement Pond Jan-Feb 2013 monthly temperature record

■ 373898 Temperature Water surface WTP
■ 373810 Temperature Air WTP

■ 373899 Temperature Water deep WTP



The graph shows a month's worth of monitoring data from this pond. Key information from the graph shows:

1. The daily temperature variation of the air (blue) is a range of around 6°C.
2. The water surface temperature does not vary so much and cools more slowly (green) showing how water temperature is more stable than that of air.
3. The bottom of the pond (black) varies very little – so most creatures keep in this zone where it is warmer and subject to less extremes.